



股票代码:002881

全球领先的物联网终端及无线数据方案提供商

# SLM759

2019 9

SLM759

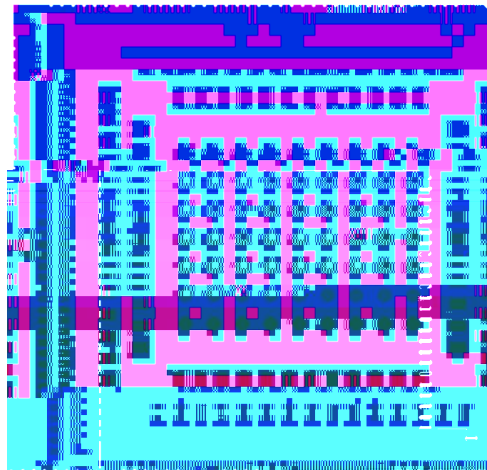
V1.01



\_\_\_\_\_

\_\_\_\_\_

\_\_\_\_\_





		*
		Qualcomm SDM450& MSM8953
CPU		Octa-core A53 (64bit) 8*1.8GHz SLM759L *Octa-core A53 (64bit) 8*2.0GHz SLM759N
GPU		Adreno506; 650MHz
		16GB eMMC + 2GB LPDDR3 933Mhz * 32GB+4GB memory
		Android 7.1
		43.0x44.0x2.85mm LCC + LGA 323pin
		-30~75° C
		-40~85° C
		TDD-LTE: B38/39/40/41 FDD-LTE: B1/3/5/8 TD-SCDMA: B34/39 WCDMA: B1/5/8 EVDO: BC0 CDMA: BC0 GSM: B5/3/8
Wi-Fi		IEEE 802.11 a/b/g/n 2.4G&5G * 11ac * 5G FEM
Bluetooth		BT4.1
GNSS		GPS/Beidou/Glonass/Galileo
	TD-LTE	Cat4 TD-LTE 117/30Mbps
	FDD-LTE	Cat4 FDD-LTE 150/50Mbps
	DC-HSPA+	42/11.2Mbps
	TD-HSPA	2.8/2.3Mbps
	EVDO Rev.A	3.1/1.8Mbps
	EDGE	Class12, 236.8kbps/236.8kbps
	GPRS	Class12, 85.6kbps/85.6kbps
SIM		DSDS 3.0/1.8V SIM LW/G/T+G



	LW/G/T+W LW/G/T+1X L/EVDO/CDMA1X+G CDMA			
Display	Matrix: FULL HD: 1920*1200 60fps;			
	LCM Size: User defined			
	Interface: 1st LCM MIPI DSI 4-lane; 2nd LCM MIPI DSI 4-lane			
Camera	Interface: CSI		4-Lane	
	Pixel:	13-24Mp/	up to 13Mp	ISP 13MP
	Camera			
	Video decode	4K 30fps SLM759L , 1080p 60fps, H.264/H.265 MP4/ WMV9/ VC1/ DivX/ VP8/VP9		



	Audio	1	MIC	
		1	MIC	
		1		0.8W D
		1		
		1		

SLM759-E	TDD-LTE: B38/40/41 FDD-LTE: B1/3/5/7/8/20/28A WCDMA: B1/2/5/8 GSM: B2/3/5/8
----------	--

SLM759-A

<b>PIN#</b>	<b>SLM759 PIN Name</b>	<b>Pad characteristics</b>	<b>Functional description</b>
PIN1	VDD_RF	PO	Power for RF in SLM759 module
PIN2	VDD_RF	PO	Power for RF in SLM759 module
PIN3	GND	GND	GND
PIN4	GND	GND	GND
PIN5	UART2_MSM_TX	B-PD:nppukp	Configurable I/O,UART2 TX
PIN6	UART2_MSM_RX	B-PD:nppukp	Configurable I/O,UART2 RX
PIN7	GPIO12_UART4_TX	B-PD:nppukp	Configurable I/O,UART4 TX
PIN8	GPIO13_UART4_RX	B-PD:nppukp	Configurable I/O,UART4 RX
PIN9	VREG_L5_1P8	PO	PMIC output 1.8V for LCD,CAM,TP, sensor
PIN10	VREG_L6_1P8	PO	PMIC output 1.8V for digital I/Os



PIN33	USB_DM	AI,AO	USB data minus
PIN34	GND	GND	GND
PIN35	GND	GND	GND
PIN36	VBAT_SNS	AI	battery voltage input to ADC
PIN37	VBAT	PI,PO	Battery,3.5V-4.2V,default 3.8V
PIN38	VBAT	PI,PO	Battery,3.5V-4.2V,default 3.8V
PIN39	KYPD_PWR_N1	DI	KEY POWER ON/OFF
PIN40	GND	GND	GND
PIN41	VBUS	PI,PO	USB Voltage
PIN42	VBUS	PI,PO	USB Voltage
PIN43	GND	GND	



PIN74	GPIO40_MCAM_RST_N	B-PD:nppukp	Configurable I/O, main CAM RESET
PIN75	CAM_I2C_SCL0	B-PD:nppukp	Configurable I/O, Dedicated camera I2C0 SCL
PIN76	CAM_I2C_SDA0	B-PD:nppukp	Configurable I/O, Dedicated camera I2C0 SDA
PIN77	MIPI_CSI2_CLK_P	AI	MIPI camera serial interface 2 clock+
PIN78	MIPI_CSI2_CLK_N	AI	MIPI camera serial interface 2 clock-
PIN79	MIPI_CSI2_LANE0_P	AI	MIPI camera serial interface 2 lane0+
PIN80	MIPI_CSI2_LANE0_N	AI	MIPI camera serial interface 2 lane0-
PIN81	MIPI_CSI2_LANE1_P	AI	MIPI camera serial interface 2 lane1+
PIN82	MIPI_CSI2_LANE1_N	AI	MIPI camera serial interface 2 lane1-
PIN83	MIPI_CSI2_LANE2_P	AI	MIPI camera serial interface 2 lane2+
PIN84	MIPI_CSI2_LANE2_N	AI	MIPI camera serial interface 2 lane2-
PIN85	MIPI_CSI2_LANE3_P	AI	MIPI camera serial interface 2 lane3+
PIN86	MIPI_CSI2_LANE3_N	AI	MIPI camera serial interface 2 lane3-
PIN87	GND	GND	GND
PIN88	MIPI_CSI0_CLK_P	AI	MIPI camera serial interface 0 c7 BDC 74



PIN114	GPIO25_LCD_TE1	B-PD:nppukp	Configurable I/O, secondary LCD TE
PIN115	MIPI_DSI0_CLK_P	AO	MIPI display serial interface 0 clock+
PIN116	MIPI_DSI0_CLK_N	AO	MIPI display serial interface 0 clock-
PIN117	MIPI_DSI0_LANE0_P	AI	MIPI display serial interface 0 lane0+
PIN118	MIPI_DSI0_LANE0_N	AI	MIPI display serial interface 0 lane0-
PIN119	MIPI_DSI0_LANE1_P	AI	MIPI display serial interface 0 lane1+
PIN120	MIPI_DSI0_LANE1_N	AI	MIPI display serial interface 0 lane1-
PIN121	MIPI_DSI0_LANE2_P	AI	MIPI display serial interface 0 lane2+
PIN122	MIPI_DSI0_LANE2_N	AI	MIPI display serial interface 0 lane2-
PIN123			







PIN233	S2B		connect to S2A
PIN234	GPIO66	B-PD:nppukp	Configurable I/O
PIN235	Reserved		Reserved
PIN236	GPIO128	B-PD:nppukp	Configurable I/O
PIN237	GPIO36	B-PD:nppukp	Configurable I/O
PIN238	GPIO33	B-PD:nppukp	Configurable I/O
PIN239	Reserved		Reserved
PIN240	Reserved		Reserved
PIN241	GRFC7_SEL	B-PD:nppukp	Configurable I/O,GRFC7_SEL
PIN242	GRFC5_SEL	B-PD:nppukp	Configurable I/O,GRFC7_SEL
PIN243	GND	GND	GND
PIN244	Reserved		Reserved
PIN245	GPIO19_NFC_I2C5_SCL	B-PD:nppukp	Configurable I/O,NFC I2C SCL
PIN246	GPIO18_NFC_I2C5_SDA	B-PD:nppukp	Configurable I/O, NFC I2C SDA
PIN247	GPIO1_SPI_MISO	B-PD:nppukp	Configurable I/O, SPI MISO
PIN248	GPIO0_SPI_MOSI	B-PD:nppukp	Configurable I/O, SPI MOSI
PIN249	GPIO137_FP_SPI_MOSI	B-PD:nppukp	Configurable I/O, fingerprint SPI MOSI
PIN250	GPIO135_FP_SPI_CLK	B-PD:nppukp	Configurable I/O, fingerprint SPI CLK
PIN251	GPIO138_FP_SPI_MISO	B-	





